

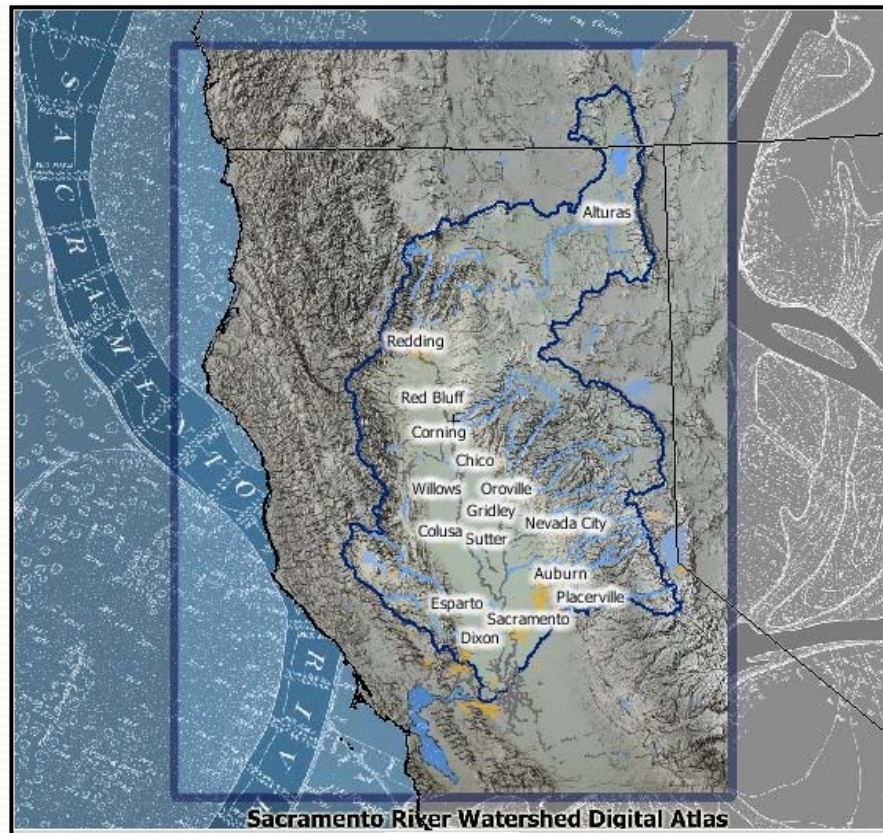
SACRAMENTO RIVER WATERSHED INFORMATION MODEL

Tell the story of your watershed.

Brought to you by the Sacramento River Watershed Program, North Tree Fire International, Iris Software, and Locus_Cor Geographics, through a grant from the DWR Watershed Program

What is SWIM?

- SWIM is a powerful tool for sharing and discovering information about the Sacramento River watershed.



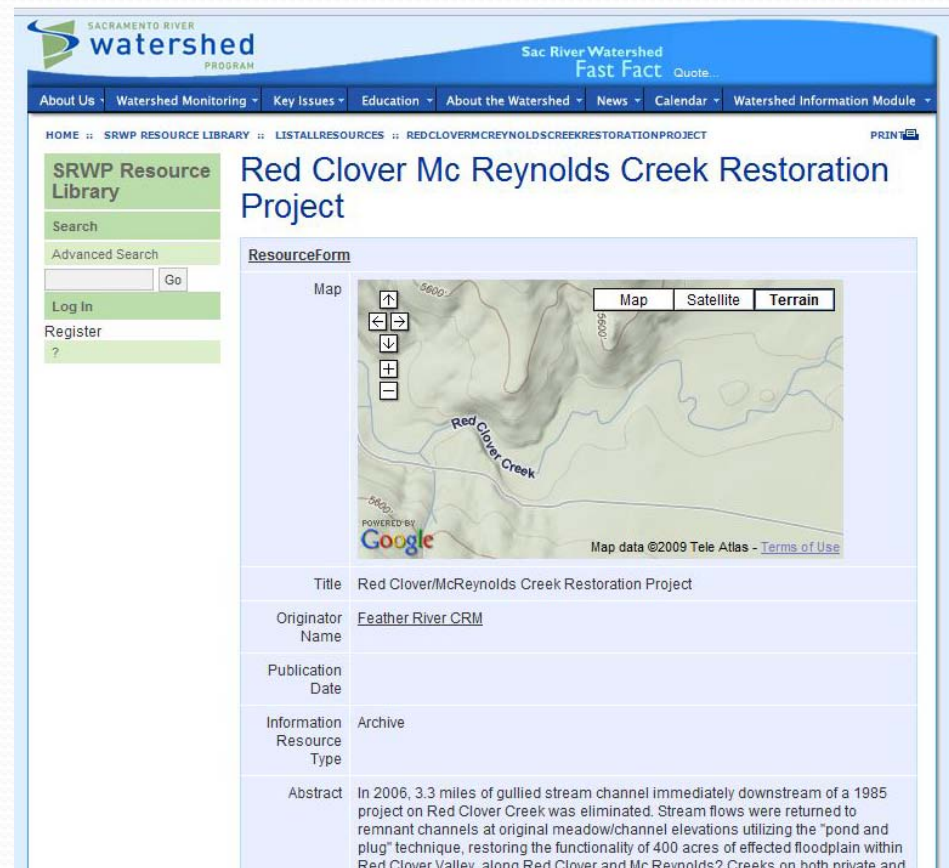
SWIM is a place to:

- Upload, store, and share reports, data, and photos about your watershed
- Discover information about your watershed
- Explore your watershed through a digital atlas
- Create document-quality maps without GIS training or software

SWIM is a place to:

- Upload, store, and share reports, data, and photos about your watershed*

**Projects added to SWIM are automatically entered into the California Environmental Information Clearinghouse*



The screenshot displays the Sacramento River Watershed Program website. The header includes the logo and navigation menus for 'About Us', 'Watershed Monitoring', 'Key Issues', 'Education', 'About the Watershed', 'News', 'Calendar', and 'Watershed Information Module'. The main content area features a search bar and a 'ResourceForm' section. The 'ResourceForm' section includes a map of the Red Clover Creek area, a title 'Red Clover/McReynolds Creek Restoration Project', an originator name 'Feather River CRM', a publication date, an information resource type 'Archive', and an abstract describing a 2006 restoration project on Red Clover Creek.

SRWP Resource Library

Search

Advanced Search

Go

Log In

Register

?

Red Clover Mc Reynolds Creek Restoration Project

ResourceForm

Map

Map Satellite Terrain

Red Clover Creek

POWERED BY Google

Map data ©2009 Tele Atlas - [Terms of Use](#)

Title Red Clover/McReynolds Creek Restoration Project

Originator Name [Feather River CRM](#)

Publication Date

Information Resource Type Archive

Abstract In 2006, 3.3 miles of gullied stream channel immediately downstream of a 1985 project on Red Clover Creek was eliminated. Stream flows were returned to remnant channels at original meadow/channel elevations utilizing the "pond and plug" technique, restoring the functionality of 400 acres of effected floodplain within Red Clover Valley, along Red Clover and Mc Reynolds? Creeks on both private and

SWIM is a place to:

- Discover information about your watershed

CEIC: The California Environmental Information Clearinghouse

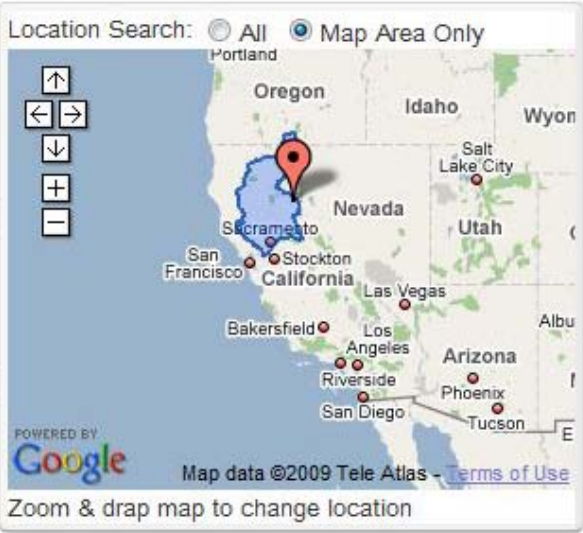
Search Term:
feather river

Filter By SRWP Projects
 Match Exact Phrase

Information Types:
 GIS Data Projects
 Other








Subjects:
 Biota/Environment Agriculture
 Ocean/Water Society/Infrastructure

Location Search: All Map Area Only



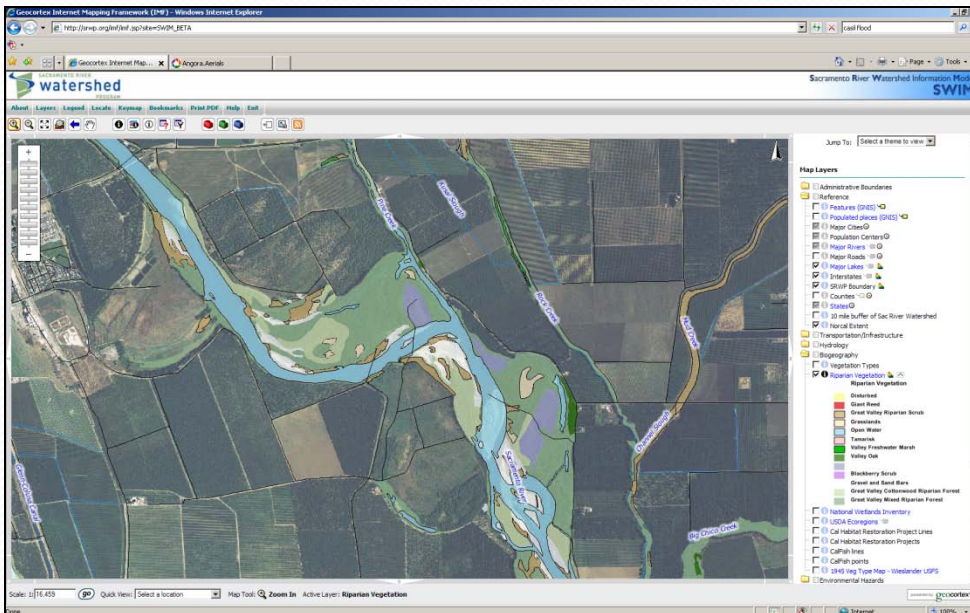
Map data ©2009 Tele Atlas - [Terms of Use](#)
Zoom & drag map to change location

Displaying all 44 matches found on CEIC

-  Big Chico Creek / Sacramento and **Feather Rivers** (DWR# Z60044)
-  Caltrans: **Feather River** Bridge Replacement
-  **Feather River** - Noble / Red Clover Creek
-  Walker Mine Tailings Revegetation Project
-  Sacramento **River** Temperature Modeling Project (2-143-250)
-  **Feather River** - Clarks 2000
-  **Feather River** - Coordinated Resource Management Plan Group Surveys / Studies

SWIM is a place to:

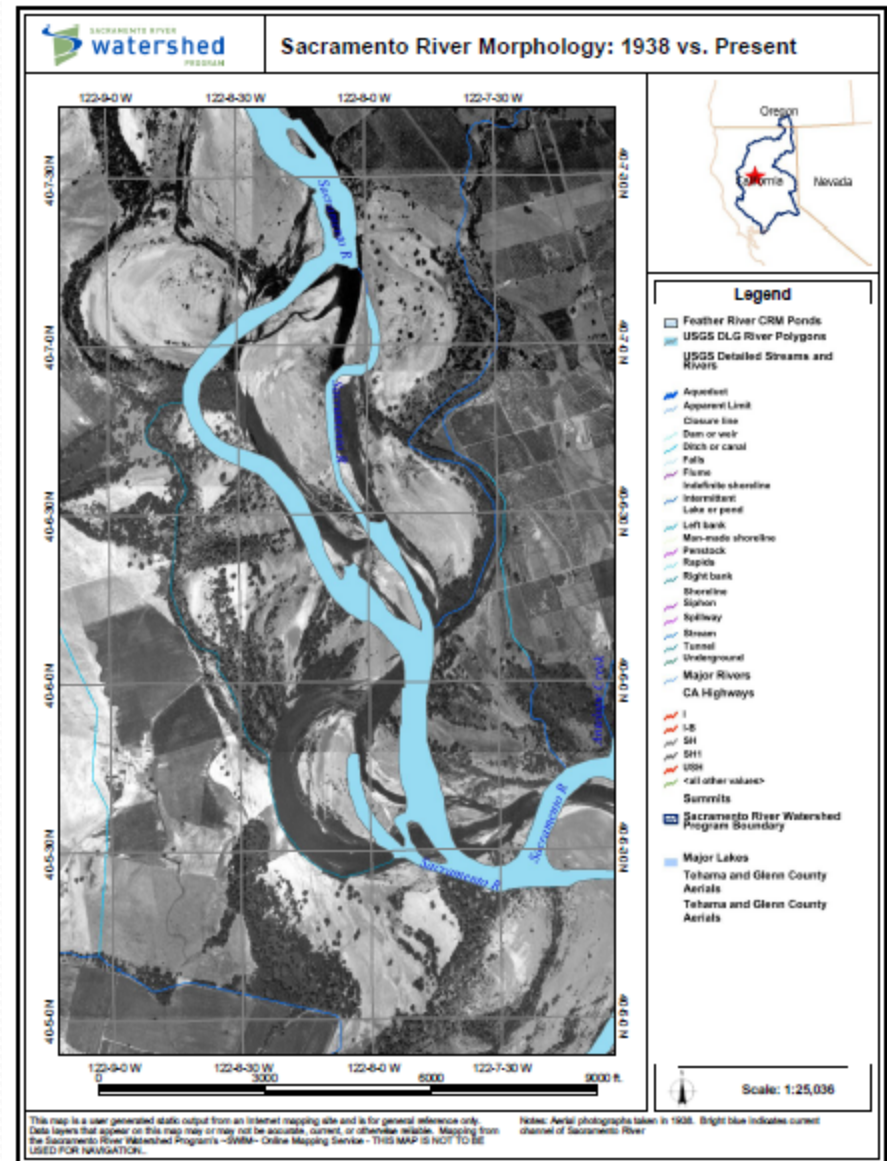
- Explore your watershed through the digital atlas*
 - Environmental hazards
 - Fisheries information
 - Biogeography
 - Land use information
 - Land cover
 - Geology
 - Aerial photography
 - Water quality



**No GIS training or software necessary!*

SWIM is a place to:

- Create document-quality maps without GIS training or software



Explore SWIM

www.sacriver.org

Contact: sara@sacriver.org