
A Regional Monitoring Program for the Sacramento River Watershed

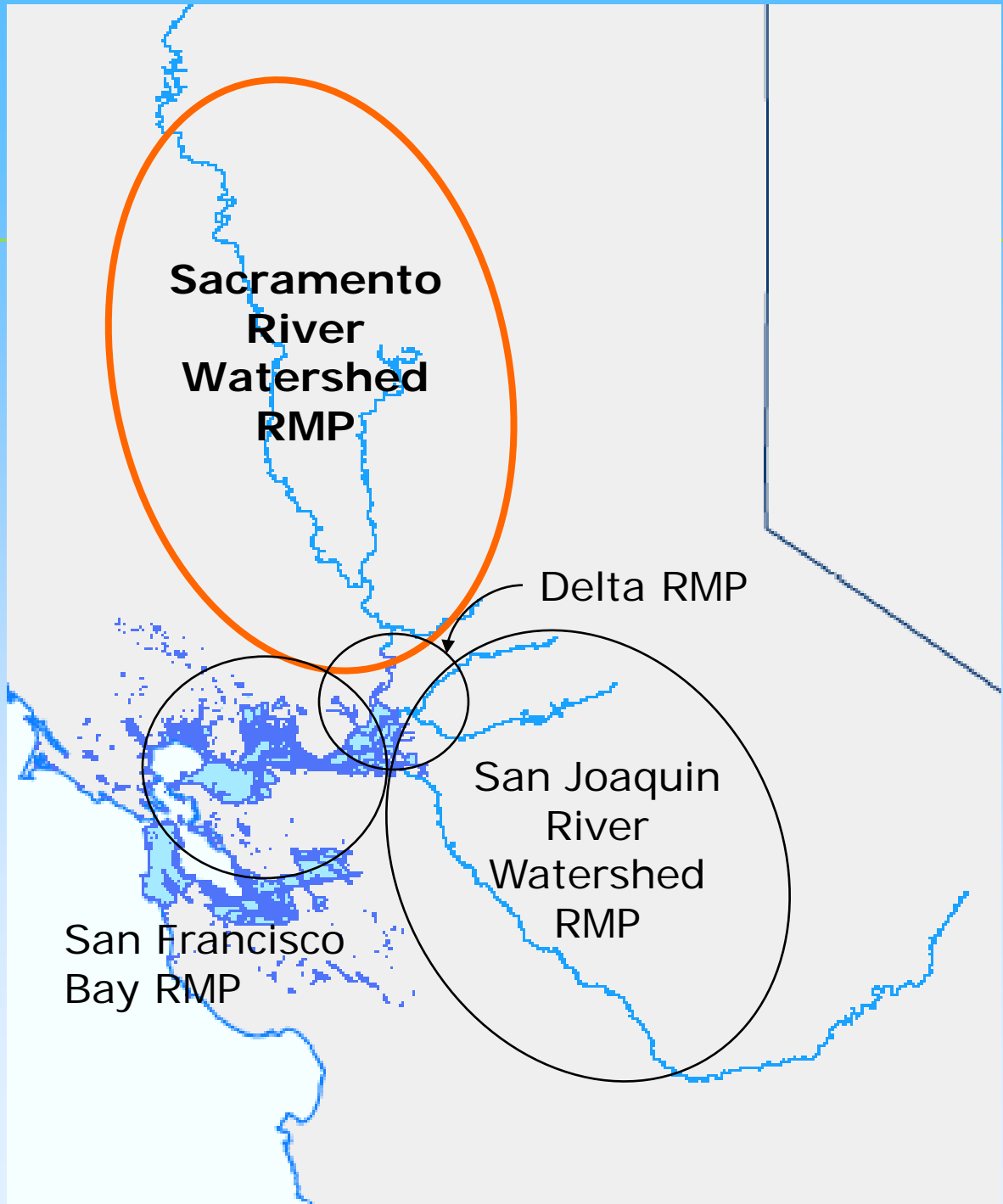
Current Plans



A Core Function of the SRWP

- Public Outreach and Education
- Local Watershed Support
- **Watershed Monitoring**





**Sacramento
River
Watershed
RMP**

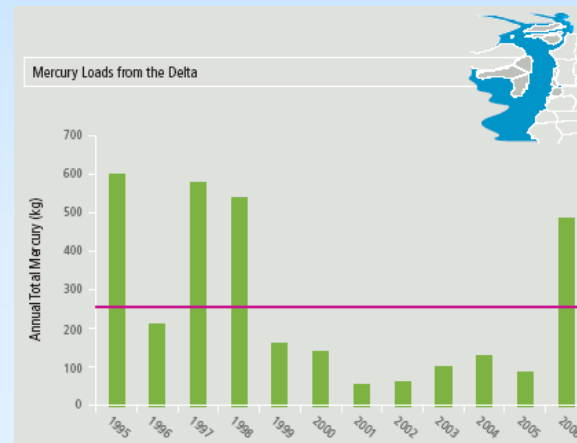
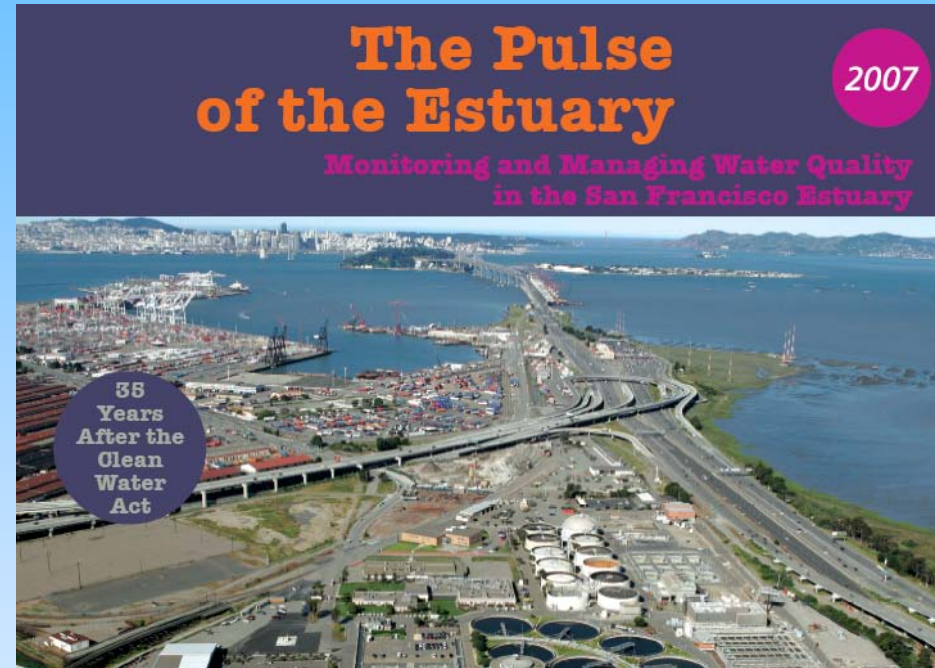
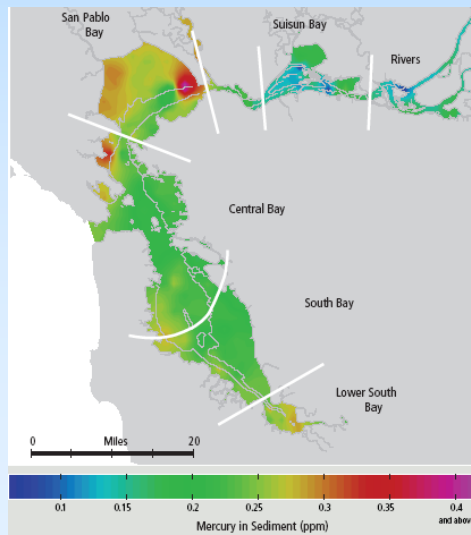
Delta RMP

San Joaquin
River
Watershed
RMP

San Francisco
Bay RMP

San Francisco Bay RMP

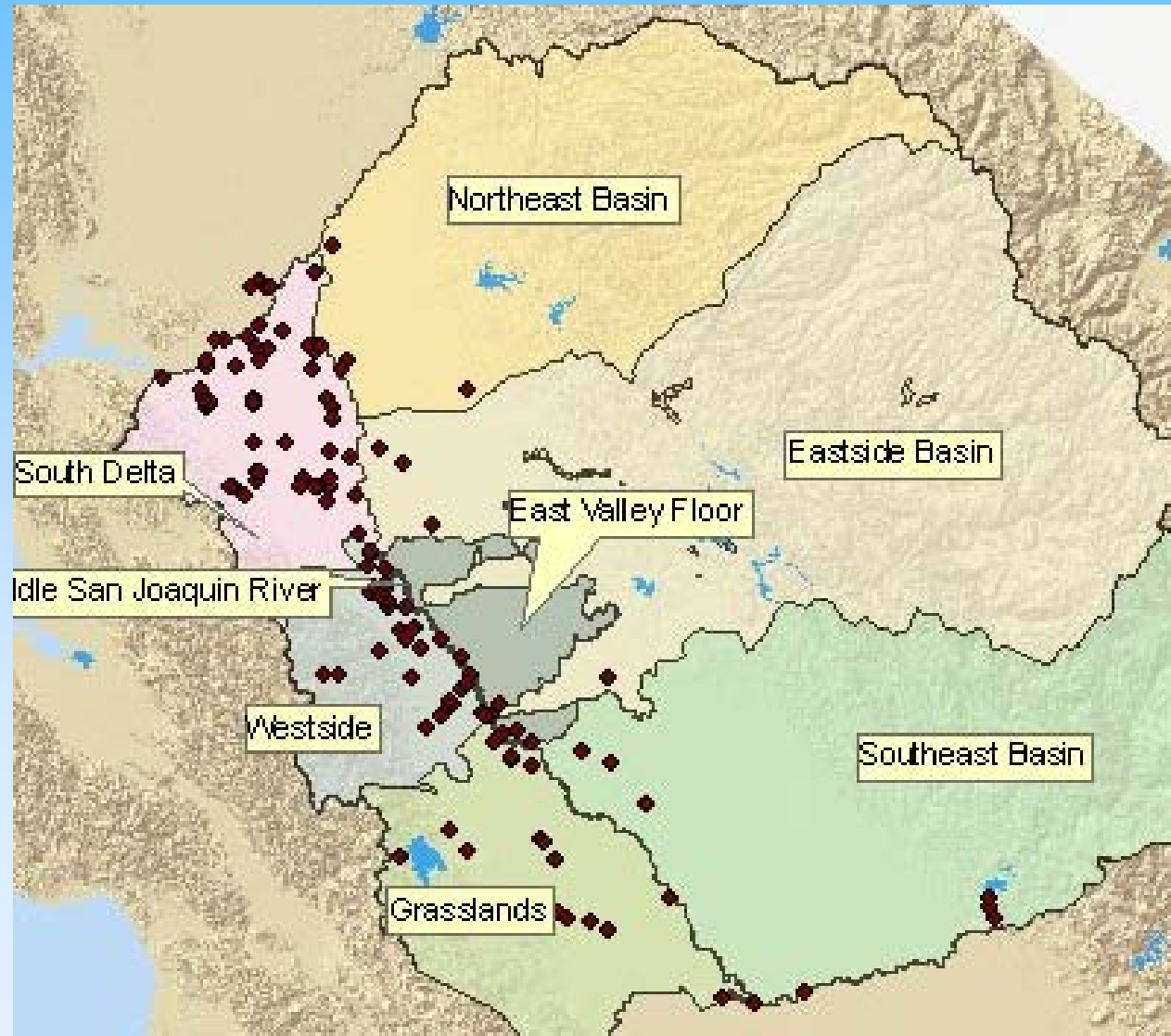
- One big bathtub
- Funded by POTW\$, MS4\$, dredger\$, power plant\$, industrie\$
- Managed by SFEI
- ~\$3 million/year



San Joaquin River

SFEI / EPA
Monitoring &
Assessment
Strategy –
Online
Monitoring
Directory

***NO CENTRAL
ENTITY***



Potential RMP Stakeholders

- NPDES permittees – POTWs, urban stormwater, construction sites
 - Irrigated Lands Regulatory Program
 - California Urban Water Agencies
 - State Water Contractors
 - CALFED agencies & Interagency Ecological Program
 - Reclamation Districts
 - Dept. Water Resources
 - State & Regional Boards
 - Dept. Public Health
 - Non-Government Organizations
 - FERC-licensed reservoir operators
-
- The diagram uses curly braces on the right side of the list to group stakeholders into four categories:
- Regulated Dischargers:** This category includes NPDES permittees – POTWs, urban stormwater, construction sites, and the Irrigated Lands Regulatory Program.
 - Water Purveyors:** This category includes California Urban Water Agencies and State Water Contractors.
 - Agencies:** This category includes CALFED agencies & Interagency Ecological Program, Reclamation Districts, and Dept. Water Resources.
 - Regulators:** This category includes State & Regional Boards, Dept. Public Health, Non-Government Organizations, and FERC-licensed reservoir operators.

Vision for the Future

- Manage by stakeholders
- Improve communications
 - Cooperate with State and Regional Boards
 - Coordinate with other RMPs
- Minimize overall monitoring costs
 - Collaborate with others to leverage resources
 - Seek grant funds for special studies
- Establish baseline conditions
- Quantify sources, effects and extent of pollution
- Track effectiveness of policies & actions

Regional Monitoring Program Near-term Planning Efforts

- Develop RMP Brochure
- Develop Water Quality Brochure
- Interview Potential RMP Partners
- *Track other efforts (SWAMP, IRWMPs, ILRPs, POTWs, CMP)*

For More Information...

Stephen McCord
Larry Walker Associates
530-753-6400
sam@lwa.com

March 2009

FINAL DRAFT

Sacramento River Watershed Regional Monitoring Program Investigation

Prepared for:
Sacramento River Watershed Program

Prepared by:
Larry Walker Associates



A Regional Monitoring Program for the Sacramento River Watershed



Monitoring in the Sacramento River Watershed

The Sacramento River Watershed Program (SRWP) has been monitoring the Sacramento River and its major tributaries since 1998. The SRWP's monitoring program was started because there was a need to better understand water quality in the Sacramento River Watershed.

Thus far, over \$5 million has been spent on the SRWP Monitoring Program through grant funding from the USEPA and more recently a Proposition 50 Watershed Program grant. In implementing its monitoring program, the SRWP has collaborated with monitoring efforts of other agencies including the Central Valley Regional Water Quality Control Board, U.S. Geological Survey, California Department of Water Resources and Department of Fish and Game.

The goals of the monitoring program were to develop a cost-efficient, coordinated monitoring program that assessed baseline conditions in the Sacramento River's main stem and its tributaries; one that identified causes, effects and extent of problems; and one which could be used to measure improvements in management.

Launching an Effort

Building on its monitoring success, SRWP is launching an effort to develop a long-term, sustainable regional monitoring program for the Sacramento River Watershed. A major portion of the funding for the program must be provided by the program's stakeholders. The major drivers for monitoring and potential stakeholders are listed below.

Drivers

- Toxic Organism Decline (POD) in the Delta
- Central Valley Drinking Water Quality Policy
- Ambient water quality objectives
- 3(d) list and TMDLs and 305(b) DES permits
- Irrigated lands permit waiver program
- Delta Board Strategic Plan, POD Resolution, Delta Actions Resolution
- Delta Island Drainage

Potential Stakeholders

- State Water Resources Control Board
- Regional Water Quality Control Boards
- California Urban Water Agencies
- California Department of Water Resources
- California Department of Public Health
- Irrigated Lands Agricultural Water Quality Coalitions
- Wastewater Dischargers
- Stormwater Dischargers
- Reclamation Districts
- State Water Contractors
- Non-Government Organizations