

A stylized, light green graphic of a tree or plant branch is positioned on the left side of the slide. It features a curved trunk, a circular canopy, and a single leaf-like shape at the top right.

Pacific Forest and Watershed Lands Stewardship Council

**Sacramento River Watershed Program
Annual Stakeholders Meeting**

January 21, 2010

Overview

- Mission
- Background and Purpose
- Upper Feather River Watershed
- Next Steps

Protecting and Enhancing Watershed Lands for all Californians





Stewardship Council Mission

The Stewardship Council protects and enhances watershed lands and uses, and invests in efforts to improve the lives of young Californians through connections with the outdoors





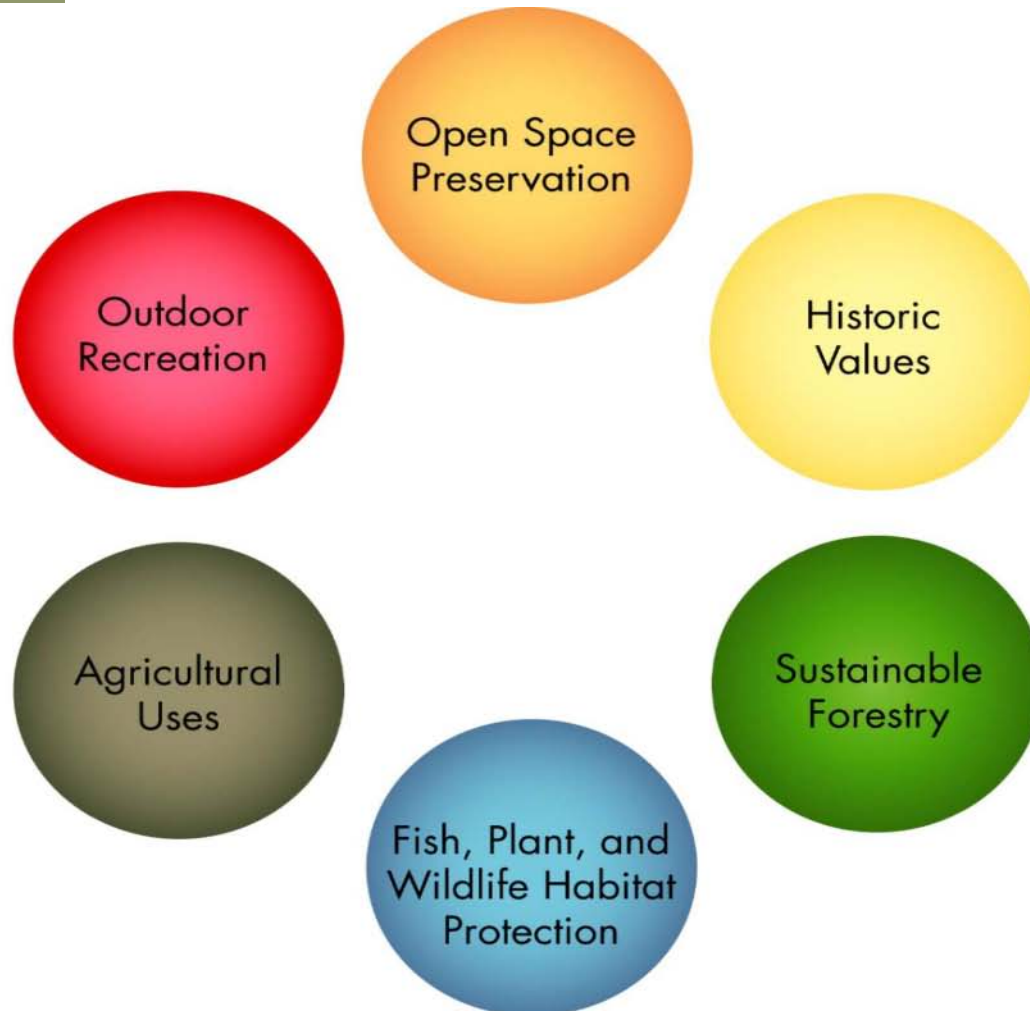
Origin, Purpose, and Requirements

- As part of the PG&E Settlement Agreement in 2003, a Land Conservation Commitment was established to permanently protect lands
- Stewardship Council formed to develop and implement a plan to ensure requirements are met
- 2013 deadline for completing the process
- Many stakeholders with different interests
- Stewardship Council values public input

Stewardship Council Governing Board



Beneficial Public Values or "BPVs"



- Land Conservation
 - 140,000 acres
 - 22 counties
 - 47 planning units, 9 watersheds
- Currently owned and managed by PG&E
- 100% to be protected by conservation easements
- Approximately 50% available for donation



Land Conservation Process



Future Land Stewards:

Future preservation and enhancement activities to involve 3 stewardship roles:

- Land Owners
- Conservation Easement Holders
- Land Conservation Partners



Future Preservation and Enhancement

Eligibility:

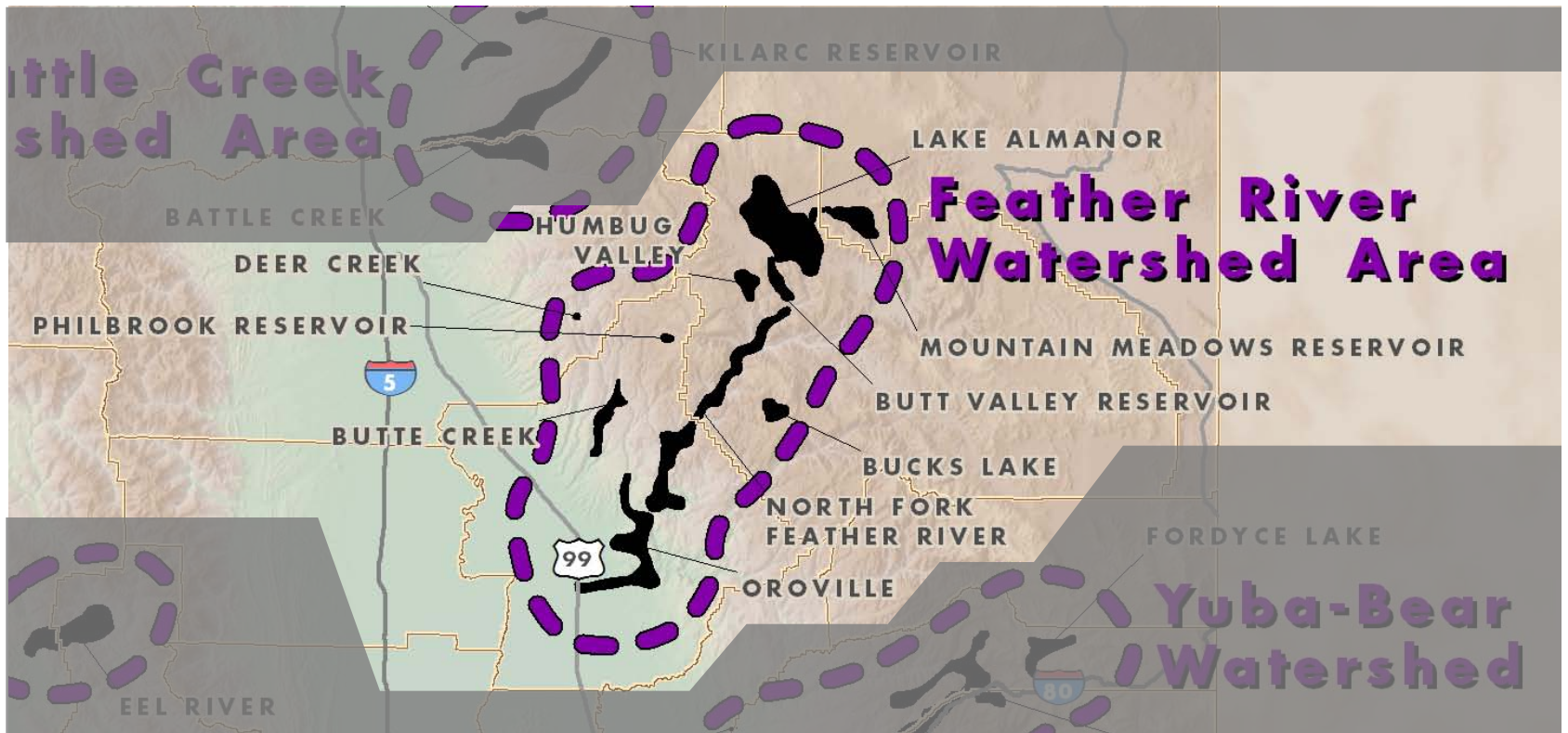
- Nonprofit conservation organizations, and public entities, including recognized tribes, are eligible to become land owners or conservation easement holders
- Stewardship Council to work collaboratively with interested organizations, and recommend those best suited for preserving, enhancing, and managing the lands in perpetuity



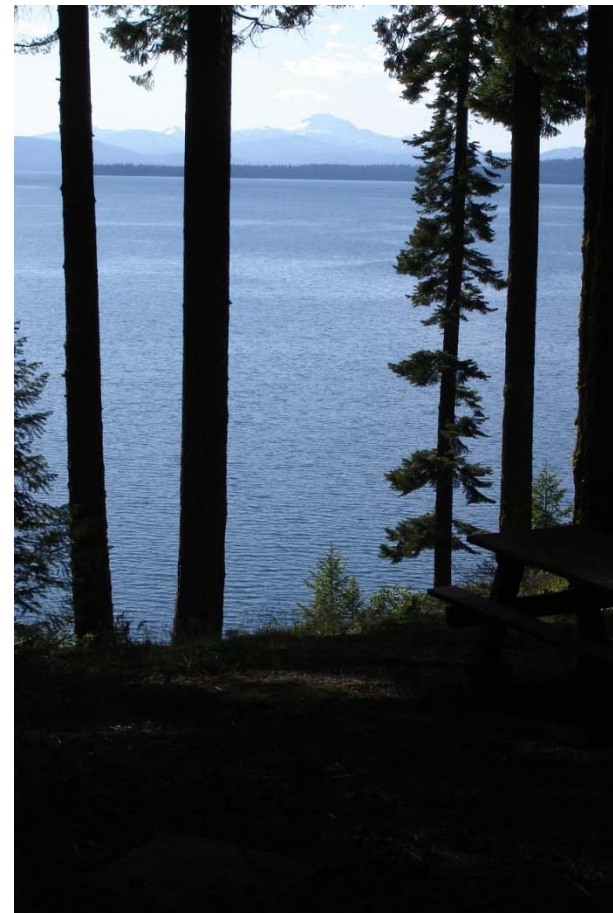
Land Conservation Program Funding

- \$70 million in funding over 10 years being provided to Stewardship Council by PG&E ratepayers
- Funding available for studies, transaction costs, and enhancements
- Funding for each transaction and each planning unit to be determined and guided by funding policy
- Funding policy developed with public input

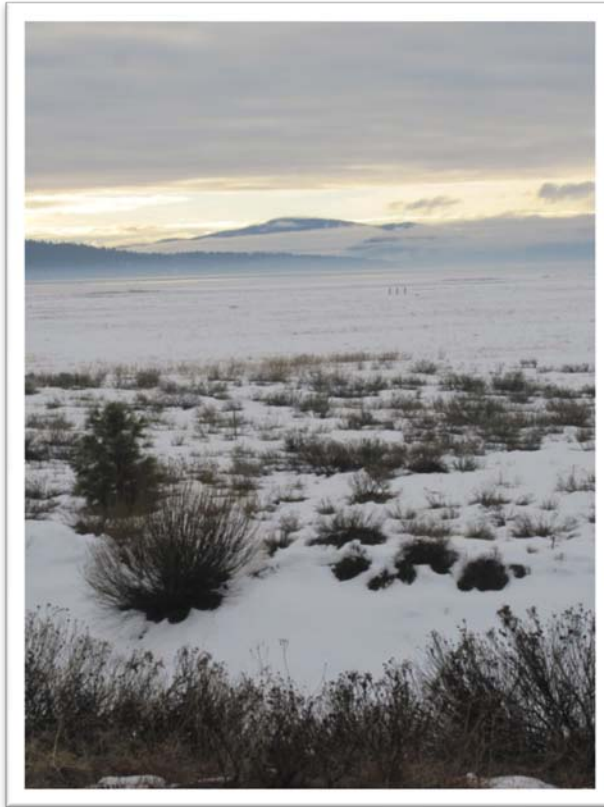
Feather River Watershed Area



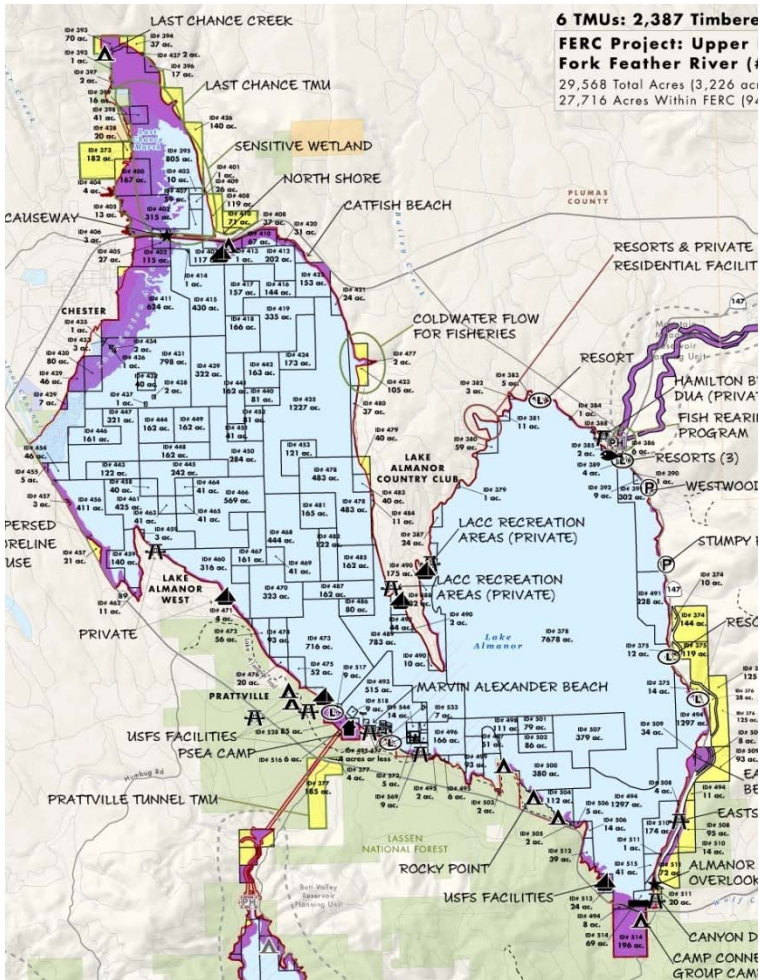
Lake Almanor Planning Unit



Lake Almanor Planning Unit

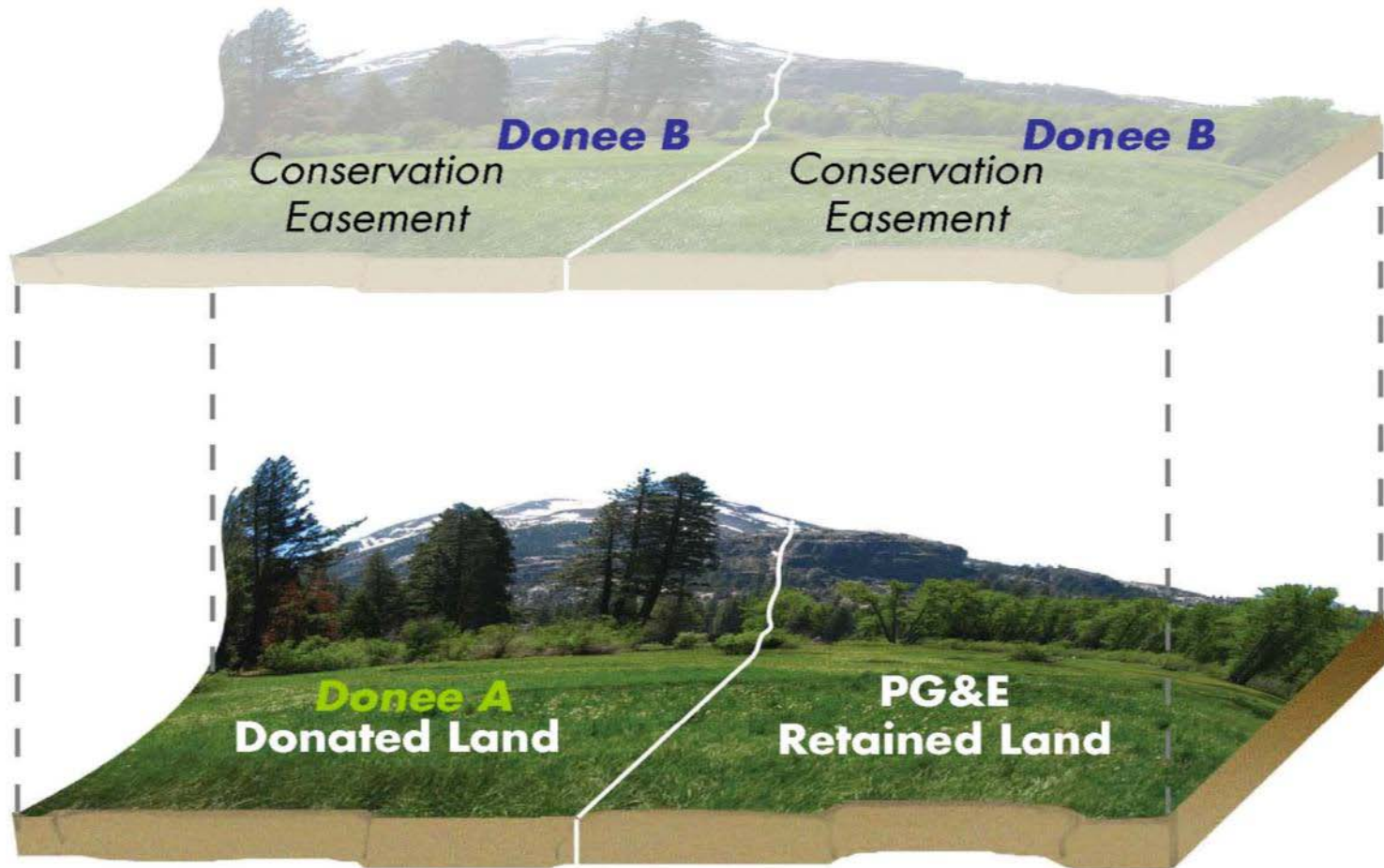


Lake Almanor Planning Unit



- PG&E Lands Preliminarily Designated for Donation
- PG&E Lands Preliminarily Designated for Retention

Land Conservation Program Overview



Relationship between Land Ownership & Conservation Easement

Future Steps

- Prepare draft Land Conservation and Conveyance Plan (LCCP) for future preservation and enhancement of the planning units
- Issue draft LCCP for 30-day public review/comment
- Stewardship Council public board meeting to consider LCCP, including public comment
- Then to PG&E, CPUC and FERC (if applicable)

Additional Resources

- Stewardship Council Web Site:
– **www.stewardshipcouncil.org**
- Land Conservation Plan (LCP) Volumes I and II
- Funding Policy
- Round 1 Information and Maps



Thank you!

Phone: (916) 441-3123

Email: hkrolick@stewardshipcouncil.org

www.stewardshipcouncil.org

