

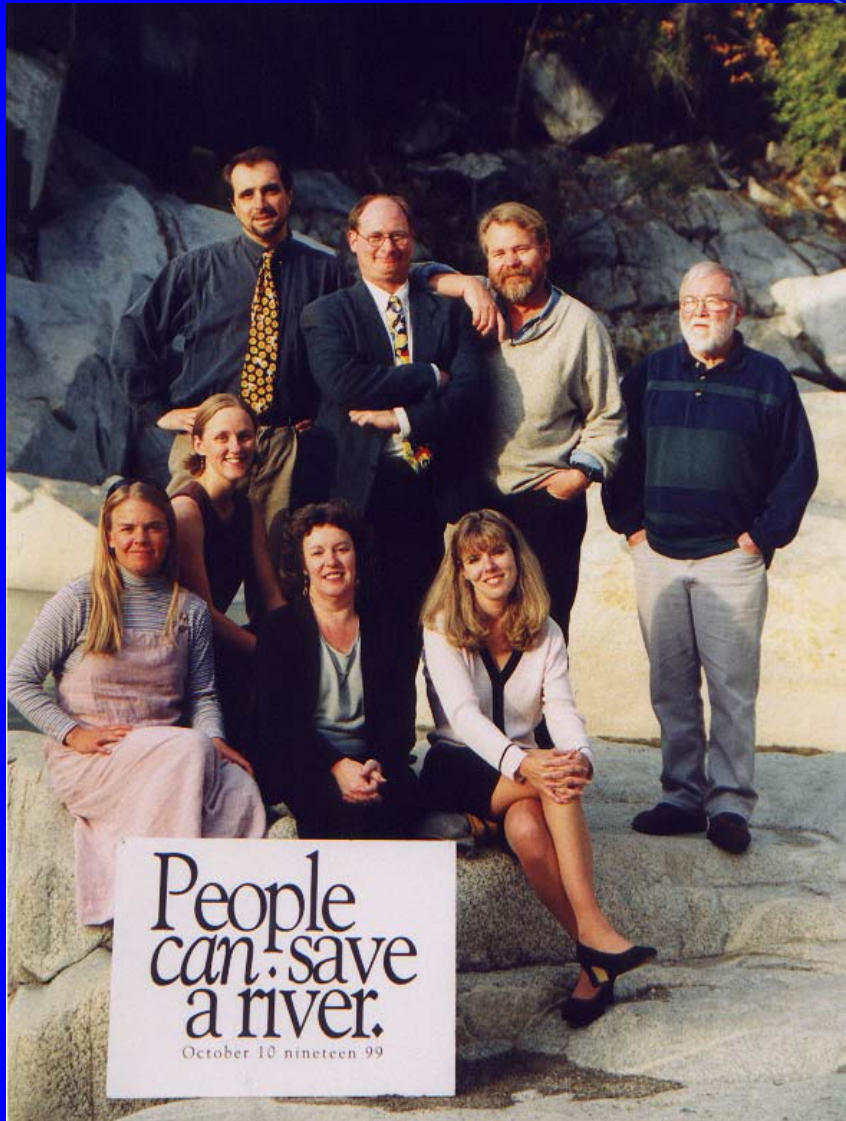
Program Sustainability and Integrating Education to your Monitoring Program



South Yuba River Citizens League

August 19, 2004

What is SYRCL?



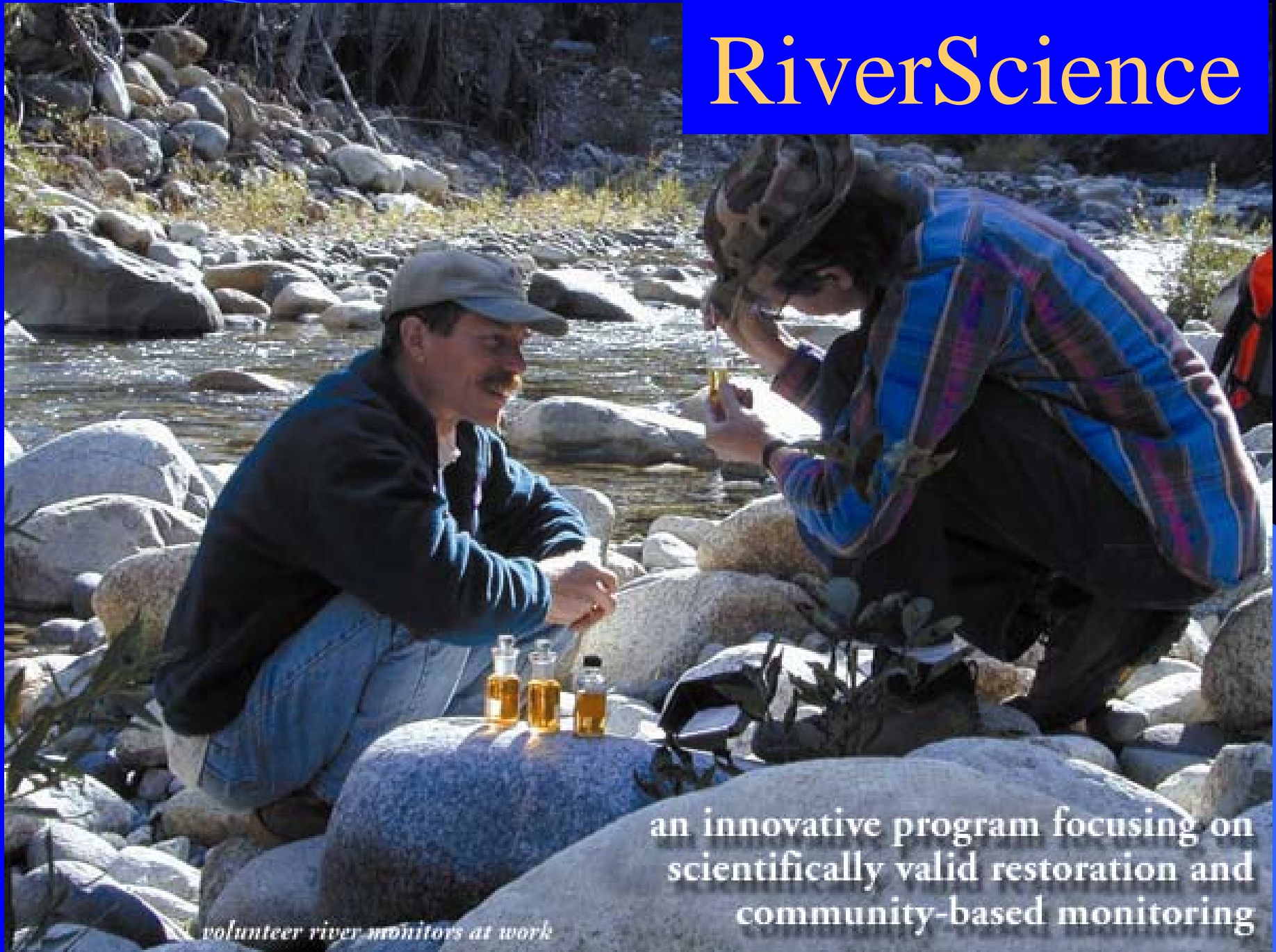
- Founded in 1983 to oppose dam threats
- Membership consists of business and property owners and river-lovers
- The largest grassroots watershed organization in the United States with 4,700 members and 500 active volunteers



SYRCL PROGRAMS

- RiverPeople
- RiverLaw
- RiverAdvocate
- RiverTeachers
- RiverScience

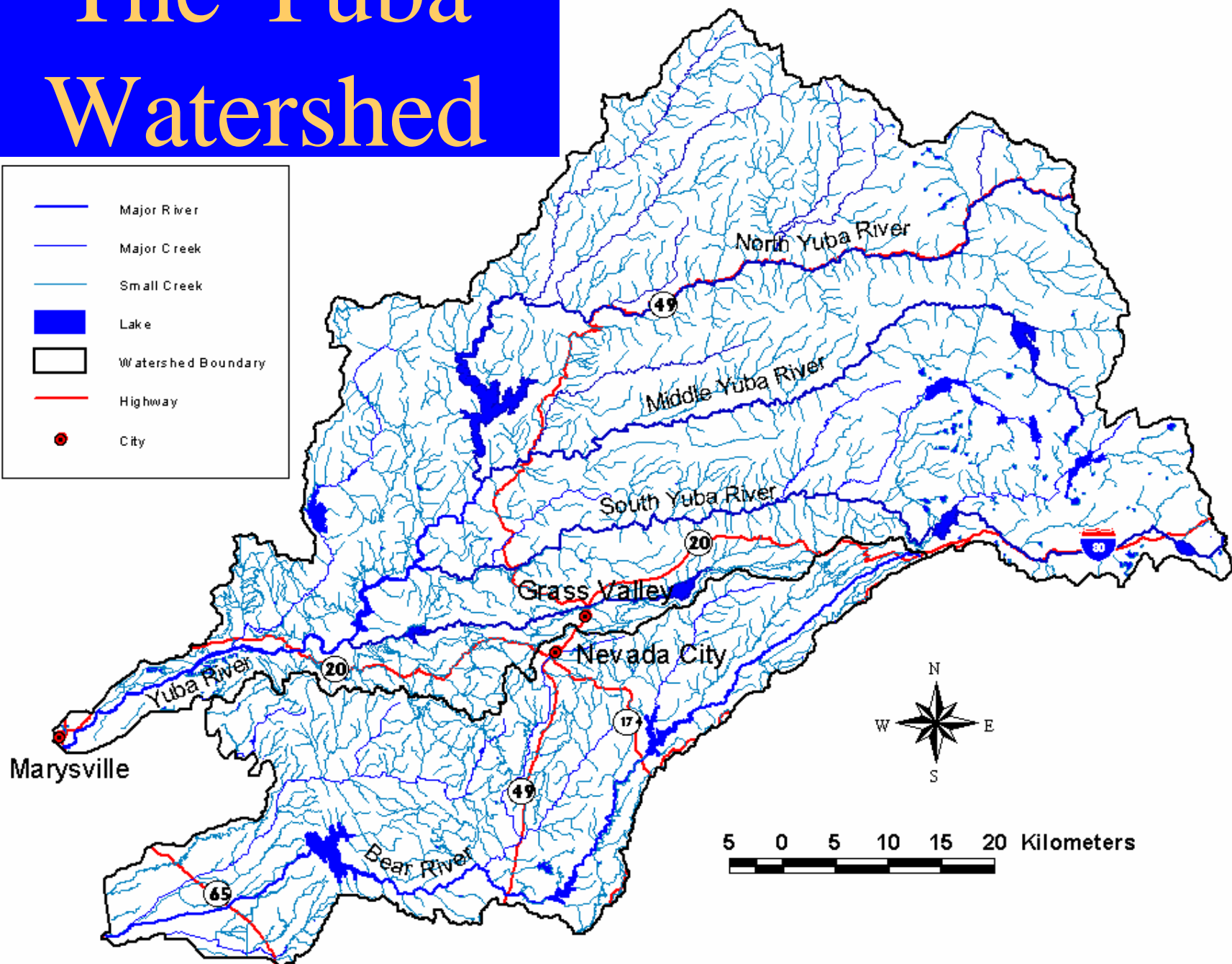
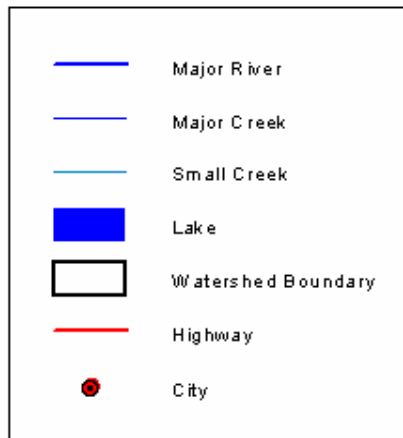
RiverScience



volunteer river monitors at work

an innovative program focusing on
scientifically valid restoration and
community-based monitoring

The Yuba Watershed



Yuba River Facts

- 1,300 square miles
- From 9,100 feet to 30 feet
- Feeds into the Feather River
- Supports one of California's last remaining wild runs of Chinook salmon and steelhead trout



Gold!

- By 1860 Nevada County had the best and most extensive system of ditches in CA
- By 1879 900 ditches in Nevada County were valued at \$7 million
- Practically all the lakes in East Yuba were dammed by the 1850's



SYRCL's Monitoring Program

- 200 trained volunteers
- 30 monitoring sites
- Monthly monitoring
- Quick response team
- Community education
- “State of the Yuba”



What do We Test For?

- pH
- Conductivity
- Temperature
- Dissolved oxygen
- Bacteria
- Metals
- Hydrocarbons
- Turbidity
- Sediment



Elements of Sustainability

- Collaboration
- Diversification of funding
- Community Involvement

Collaboration

- Yuba Watershed Council
- Monitoring Committee
- Technical Committee
- Science Committee
- SWRCB/RWQCB



Diversification of Funding

- Membership: new members, renewals
- Events
- Local Businesses
- Special Appeals
- Board donations
- Major Donors
- Advertising
- Sales
- Fees for Service
- Government Grants
- Foundations

Community Involvement

- Media: share your news
- Educational events and programs
- Schools
- Businesses/Chamber of Commerce
- Website and e-mail updates
- Participating in others' events
- Volunteers are your ambassadors

Educational Opportunities

- The internet
- The local media
- Your own media
- Volunteer Monitors
- Schools
- Involve the community in restoration projects

The Internet

- Map with monitoring detail on your website—www.HealtheBay.org
- Put annual reports on internet
- Put raw data on internet
- Monthly updates via e-mail newsletter

Print and other Media

- Quarterly updates via newsletter – “water quality corner”
- Press releases to the local press and radio re results
- Radio and newspaper interviews
- Regular E-mail updates—www.Topica.com
- Billboards, commercials on TV, radio PSA’s.

Educating your monitors

- Quick feedback to monitors—thoughts, suppositions
- Regular approved reports
- Give them last year's data when they monitor
- Form a speakers bureau from volunteer monitors

Schools

- Train students and their teachers to be monitors
- GLOBE program—www.GLOBE.gov
- Wolf Ridge Spring Happenings—
<http://www.wolf-ridge.org/spring.html>
- School water audit

Community Involvement

- Storm drain labeling:
<http://www.syrcl.org/howtohelp/howtohelp-storm.asp>
- Truckee River Day:
<http://www.truckeeriverwc.org/riverDay.htm>
- Have a center on location: Bridgeport Science Center
- Placer Nature Center:
<http://www.placernaturecenter.org/>
- SYRCL docent program
- SYRCL assemblies

Fun!





Yuba River
Monitors--
Monitoring the Yuba
for future
generations.